

GIS and Geospatial Modelling Services



wkcgroup.com





WKC Group is an award-winning, international
Environmental Consultancy Firm

Through specialist, science-based study we
advise clients in various sectors including;



We operate out of strategically located offices in the Middle East, Africa and Europe.

Our services are broadly categorised as follows;

- Air Quality
- Noise & Vibration
- Hydrodynamic Modelling
- Ecology (Marine and Terrestrial)
- Environmental and Social Impact Assessment
- Assurance
- Sustainability Reporting
- GIS and Geospatial Modelling

While supporting developments that make our
lives stronger, safer and richer, our mission is
to promote a healthy future for our world and
all of us that call it home.





GIS Services

WKC Group has extensive experience in the deployment of the latest geospatial technologies. This includes:



GIS and Geospatial
Modelling



Space Based
Habitat Mapping



Global Positioning
System (GPS)
Survey



Data Management



Mapping



Bespoke Training

From the use of satellites to drones, global positioning systems (GPS) and rugged field survey tablets, photogrammetry, machine learning and data science, WKC offers a refreshingly modern approach to their environmental consultancy work.

GIS and Geospatial Modelling

We deliver a wide range of services from digitisation and data entry, cartography, and map production through to geospatial data science, advance geoprocessing, and spatial analysis.

Some recent projects include:



Regional master planning with governmental organisations



Zone of Theoretical Visibility (ZTV) analysis for windfarms



Right of Way (ROW) mapping for pipelines and overhead power transmission lines



Groundwater modelling for industrial facilities



Optimised tree planting locations for habitat restoration



Modelling the impact of sediment deposition on vulnerable habitats from offshore dredging activities







Space Based Habitat Mapping

Our team of experts in earth observation technology use multispectral data collected by satellites to map and quantify habitats throughout the world.

Working with the latest satellite technologies such as [Airbus Pléiades Neo](#), our team of GIS specialists are available to provide habitat maps of terrestrial and marine environments with a resolution of up to 30cm.

Some recent projects include:

	Right of Way (ROW) mapping for pipelines and Overhead Transmission Lines (OTHL)
	Habitat constraints mapping for coastal developments
	Vegetation mapping around industrial developments
	Mangrove health assessments for ecotourism





GPS Survey

Global Positioning System (GPS) technology enables us to provide horizontal and vertical positional data with accuracies of up to 1m.

Our devices also fully integrate with our GIS software and the information they capture can be uploaded to cloud storage during a field survey. This means staff in our offices can receive and be working on survey data before our field staff have even left the survey site.

Some recent projects include:



Mangrove tree mapping in near shore environments



Positioning of offshore monitoring equipment



Sand dune restoration



Locations of sound level meters for noise modelling

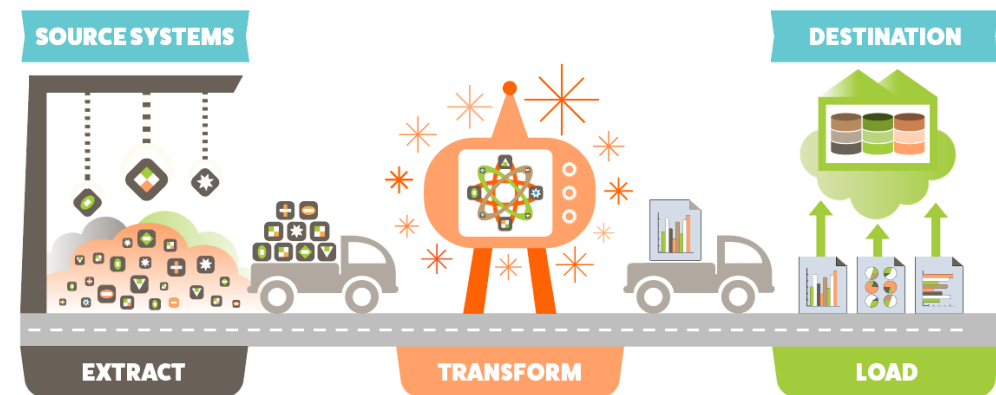


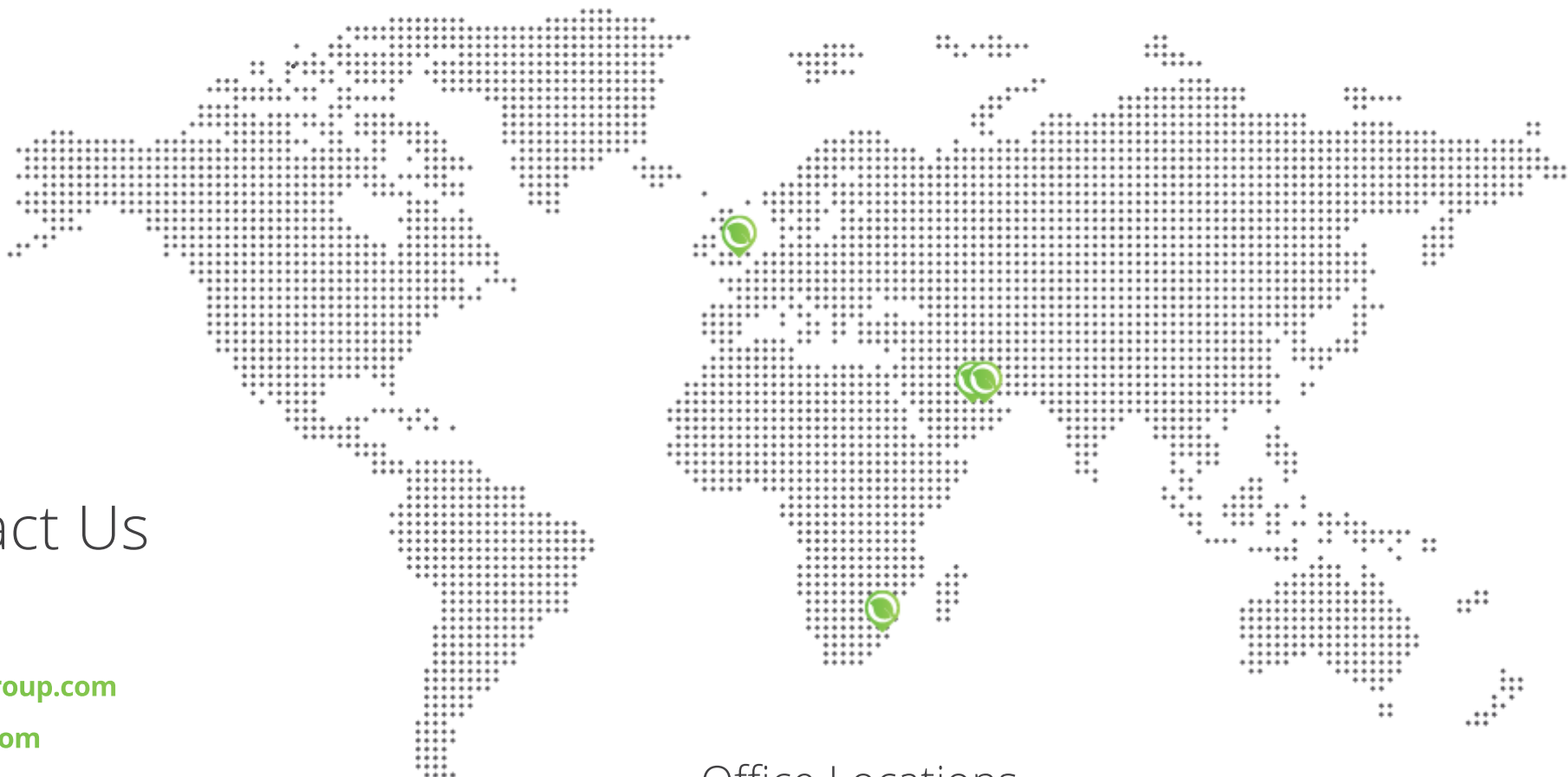
Data Management

From Export, Transform Load (ETL) operations to spatial database development we can help you to make the most of your data by providing you with the best advice on data acquisition, storage, analysis, and output as well as tailoring your data to your specific requirements.

Our capability to work with over 300 different data formats means that we can work with just about any data that is sent our way.

ETL PROCESS





Contact Us

info@wkcgroup.com

wkcgroup.com



@wkcgroup



@wkc_group



[linkedin.com/company/wkcgroup](https://www.linkedin.com/company/wkcgroup)



@wkcgroup



WKC Group

Office Locations

UK

London

UAE

Abu Dhabi

Dubai

South Africa

Durban