



Guideline book for

# FEES AND FINES FOR WASTE DISPOSAL

in the Emirate of Dubai

# Contents

Waste Management

01

Introduction

02

The policy of issuing a fees and fines  
resolution for waste disposal

05

Violations and fines tables

06

Frequently Asked  
Questions

07

General guidelines

03

Terminologies

04

waste disposal fees tables

08

Smart gates system  
(Nafith)

09

Smart vehicles tracking  
(RASID)

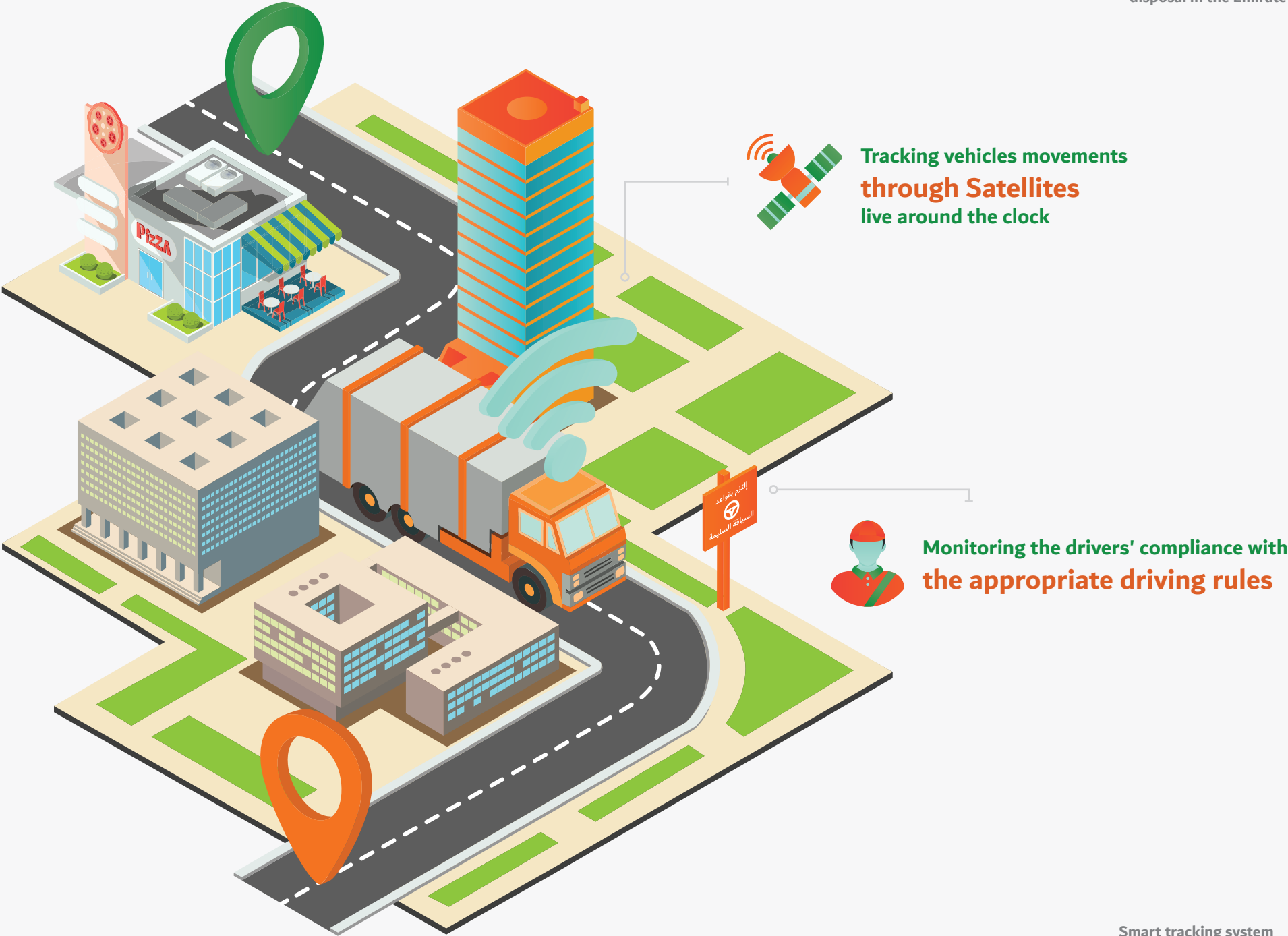
# Vehicle Tracking System RASID

## Overview

Is a global Positioning System (GPS) based technology that provides real time management and tracking system for fleet. The system is also integrated with efficiency and security applications to enhance the productivity of the vehicle and manpower. The system will be characterized by its flexibility, strength, stability and continuous uninterrupted performance. Incorporated in the design are wide ranges of functionalities such as vehicle maintenance, vehicle tracking and diagnostics, driver management, speed management, fuel management, health and safety management.

## Features

- Reporting - Geo-fencing
- Speed Tracking -Group Tracking
- Emergency Alert - Route Management
- Alerts & Notifications-- Reverse Geocoding
- Live Fleet Online Tracking -Fuel consumption Control
- Vehicle diagnostics capability -Real time map based tracking
- Trip summary analysis reports - Multi-Access Groups of End-users
- Customized Maps for decision support
- Route optimization and deviation analysis
- Tracking of External Vehicles (Non-DM vehicles).



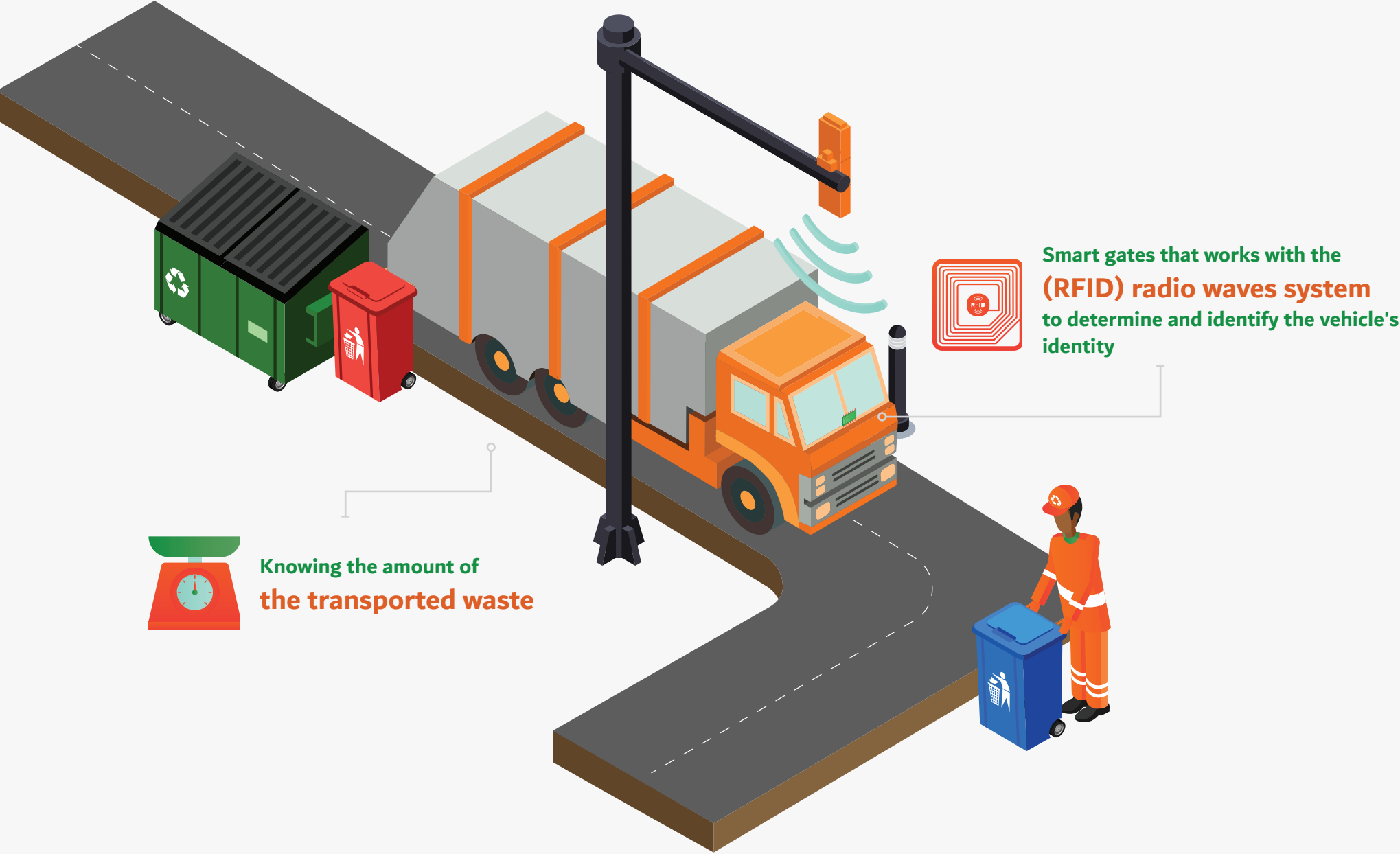
# Smart Gate System Nafith

## Overview

- Smart Gate System (Nafith) is a fully automated entry management system at Dubai Municipality landfill sites. Radio Frequency Identification (RFID) technology, Automatic Number Plate Recognition (ANPR) and smart software were used to control entry of vehicles to the sites, gather weight information and automatic credit deduction.

## Features

- Fast entry and exit of vehicles.
- Automatic vehicle recognition.
- On line management of vehicle registry and associated information.
- Interactive and transparent credit management system.
- Data collection system (quantity, sources, and types of waste).



# General guidelines in waste disposal sites

- 01 A fee of AED 10 will be deducted from each vehicle that enters the waste disposal site.
- 02 General waste disposal fees are deducted when the vehicle enters (see Table 1).
- 03 The part of the ton is calculated as one ton per entering movement.
- 04 **Nafith** gates will not open except for the authorized vehicles.
- 05 Unauthorized vehicles will be returned.
- 06 Vehicles that do not carry a payment balance in **Nafith** system will be returned.
- 07 Waste Management Department has the right to send vehicles to the materials recovery facilities and not to

- 08 Accessing the side gates is permitted only for the authorized vehicles.
- 09 The gates will not open for the vehicles that are not reconditioned in the **Nafith** system.
- 10 The site guidelines must be followed and also the instructions of its supervisors.
- 11 In case of any emergency defect, the carrier can stand in a side yard made specially for this purpose.



Side yards  
For emergency cases



# Frequently asked questions

## Concerning the Waste Disposal Service (WDS) System

- **What types of waste need a permission to dispose?**
  - Any waste produced in the Emirate of Dubai - except household waste - it requires a permission to dispose
- **Who applies for waste disposal?**
  - The waste producer should submit the application for waste disposal through the electronic system, and should also ensure compliance with the licensing requirements in terms of disposal method
- **How can you have a user name and password in the waste disposal service account?**
  - Please return to the attachment number (1), which shows the flow chart for applying for an online waste disposal service, with the documents required for submission.
- **Why my order is not approved yet?**
  - There is an incomplete document / information / incomplete data or incorrect details in the application. Please check your email or online order status to confirm if there are other requirements / modifications / to be added or attached by Dubai municipality.
- **What should I do if I did not receive any confirmation from the waste disposal system even after 3 working days?**
  - When your application is processed by the waste disposal employee/ reviewer, an e-mail and an automated text message are sent to the applicant based on the contact details of the business user (the trade user) supplied to the system. If no confirmation is received, please check your communication information in the system.

- **Where can I pay the waste disposal fees?**
  - For hazardous waste, you can pay through the online waste disposal service or through any of the Dubai municipality treasurers near you, by submitting the payment voucher number which you will find on the email page sent to you. You can ask about the nearest site to you by dealing the number 800900. You can find the payment voucher number on the email page sent to you, or by checking the copy of the permit. Disposal fees must be paid at the disposal sites based on the actual quantity you want to dispose, but, after the application of the Executive Council Resolution No. (58) for 2017, the fees for the unwanted materials will be paid according to the quantities (weight).
- **What are the procedures for the processes of recycling waste through the waste disposal system?**
  - There should be a recommendation that waste can be recycled by the relevant employee / reviewer to the waste that was applied to the system for disposal. The applicant must review the person responsible for the recycling operations through the approved list of recycling companies published through the Dubai Municipality website. The applicant must attach a letter of acceptance from the recycling companies in order to have a no objection certificate from Dubai municipality. After producing the no objection, the recyclable waste must be sent to the agreed company within the specified time from the date of issuing the no objection.
- **Are all types of wastes required to be transported by vehicle registered to RASID system?**
  - Yes, all vehicle to be used to transport wastes required to registered to the RASID System.
- **What if I used my own vehicle?**
  - You may use your own vehicle but it should be accredited by Dubai Municipality and registered to RASID System.
- **I have a permit for unwanted materials, who should I contact to collect my waste for disposal**
  - List of approved transporters in Dubai Municipality (DM) is posted in DM Website ([www.dm.gov.ae](http://www.dm.gov.ae)), then click to Environment and Coast

Table (7)

Fines and Violations

This table is concerned with determining the violations and fines fees for non-complying with Dubai Municipality waste management instructions and guidelines

N	Statement	Fee amount (in Dirham)
1	Non-compliance with the DM work instructions related to disposal sites	500
2	Violating the health, safety, and environmental procedures at a disposal site	5000
3	Tampering with or damaging equipment, devices, or property at disposal site	10000
4	Entering a general waste disposal sites without a permit	2000
5	Entering a hazardous waste disposal sites without a permit	5000
6	Bringing in general waste from outside of the Emirate to be dumped in a landfill in the Emirate	10000
7	Bringing in general waste from outside of the Emirate to be treated or recycled in the Emirate without a permit	10000
8	Bringing hazardous waste from outside the Emirate into a waste disposal sites	20000
9	Bringing in general waste out of a waste disposal site without permit	1000
10	Bringing hazardous waste out of a waste disposal sites without permit	10000
11	Disposal of general waste at other than the waste Disposal site designated for that type of waste	1000

12	Disposal of hazardous waste at other than the designated sites	50000
13	Contaminating a hazardous waste disposal site	5000
14	Bringing, into a waste treatment facility, hazardous waste that does not conform to the waste disposal permit issued by the DM	5000
15	Conducting a waste management activity without permission	10000
16	Violating the terms of a permit	5000
17	Faliure to notify the DM of any amendment to the details of a facility within (1) month from the date of the amendment	5000
18	Submitting false documents or information to obtain a permit to conduct a waste management activity	5000
19	Engage the activity with an expired permit	5000
20	Failure to affix the sticker or electronic chip to the designated place	1000
21	Failure to submit to the DM the reports, information, and date required by recognised entities within prescribed time frames	1000
22	Tampering with the stickers or electronic chips	10000
23	Failure to comply with the approved instructions and technical guidelines, and the requirements related to conducting waste management activities	5000



Service Name on Portal  
Request a Permit for Waste Management Activity (Collection/ Transport/ Trading)

Service details

This service enables the customer to obtain a permit for carrying out waste collection/ transport/ trading activities in Dubai, this service is mandatory for private companies who intends to carry out such activities. The permit is a prerequisite in obtaining trade license from DED.  
This service is provided by Waste Management Department.



Table (5) Fees for issuing permits to conduct waste-related activites

N	Statement	Fee amount (in Dirham)
	<b>Issuance or renewing a permit to conduct any of the following activities:</b> Textile and fabrics scrap trade Plastic scrap trading Paper scrap trading Metal scrap trading Glass scrap trading	<b>1000</b> Per annual activity
1	Construction and demolition waste collection and transportation services Meat and fish waste trading Wast collection, removal, and transportation services Streets cleaning services Organic waste collection services Food waste collection services Used tyre waste trade and Any other waste management activity	
2	Amending or adding to the details of a permit to conduct a waste management activity	
3	Issuing a replacement for a lost damaged permit to conduct a waste management activity	

Table (6) Fees for Issuing Stickers and Electroinc Chips for Conducting Waste-related Activities

N	Statement	Fee amount (in Dirham)
1	Issuing a sticker or an electronic chip	<b>300</b> Per sticker or electronic chip
2	Issuing a replacement for a lost or damaged sticker or electronic chip	
3	Waste disposal site entry fee	<b>10</b> Per vehicle





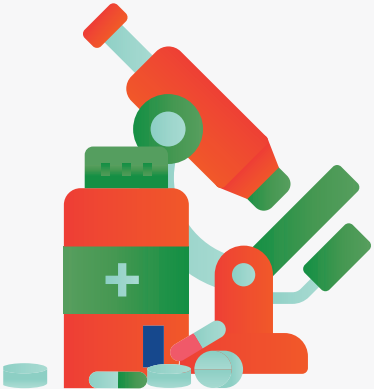
**Table (3)**  
Hazardous Waste Treatment Fees

N	Statement	Fee amount (in Dirham)
1	Disposal of difficult waste (liquid and semi- liquid)	20 Per tonne
2	Disposal of contaminated empty bags	100 per 100 Kilogram
3	Disposal of solid difficult waste/ contaminated potting soil	200 Per tonne
4	Evaporating of industrial liquid waste	
5	Destruction of fireworks and firecrackers	
6	Disposal of of sludge generated from sewage treatment plants	
7	Dumping of unpackaged waste into single-lined landfill	700 Per tonne
8	Disposal of waste contained in drums(storage or landfill)	
9	Disposal of contaminated empty drums and containers	
10	Chemical treatment of liquid hazardous waste	400 Per tonne
11	Dumping of unpackaged waste in double-lined landfill	
12	Closed incineration	500 Per tonne
13	Physical treatment (stabilisation)	
		1000 Per tonne



**Table (4)**  
Medical Waste Treatment Fees

N	Statement	Fee amount (in Dirham)
1	Treatment of medical waste generated by the government sector	3 per Kilogram
2	Treatment of medical waste generated by the private sector	6 per Kilogram



Service Name on Portal

Request for Permit of Wastes Disposal (Hazardous/Trade Wastes/Unwanted Materials)

Service details

This service enable the customer to obtain environmental permit of waste disposal that are generated from all establishments excluding domestic waste & construction waste, garbage, this service is mandatory and eligible by all the concerned companies. This service is provided by Waste Management Department.



Table (2)

Fees for Disposal of Unwanted Materials

N	Statement	Fee amount (in Dirham)
1	Paper, tapes, compact discs (CDs)	200 Per tonne
2	Leather, rubber, sponge and fabric waste materials	
3	Food unfit for consumption	
4	Spare parts, utensils and non-electronic toys	
5	Waste furniture, wood and bulky waste	
6	Electric and electronic equipment	300 Per tonne
7	Personal hygiene products	
8	Carcases/putrid meat	
9	Diseased plants, and contaminated fertilizers and potting soil	500 Per tonne
10	Tobacco and cigarettes	
11	Alcoholics drinks	5 per Kilogram
12	Perfumes, contact lenses and cosmetics	

The smart gates in the waste disposal sites

Nafith system



Smart gates works with the radio waves (RFID), it uses an electronic chip for vehicle’s identification when they enter the certified waste disposal site in the Dubai Emirate.

Attached tables with the resolution

The fees determined in the resolution for the sites and the sites that Dubai Municipality operates. Also the waste disposal sites related to the private investment sector are not covered by this resolution. and it has the right to negotiate the pricing with the producing or carrying entities.

Table (1)

- ◆ This table is concerned with determining the General Waste Disposal Fees, it is concerned with dividing the waste disposal fees according to the type of the transported waste and it’s treatment method.

N	Statement	Treatment method	Fee amount (in Dirham) (per Tonne)		
			2018	2019	from 2020 onwards
1	Municipal waste	Landfilling	80	90	100
2	Organic waste	Waste treatment plants	30	40	50
3	Recyclable material (Mixed with organic waste)	Waste sorting stations	30	40	50
4	Recyclable materials (Free from organic waste)	Waste sorting stations	20	25	30
5	Agriculture waste	Waste treatment plants/ Waste composting plants		10	
6	Construction and demolition waste	Landfilling	10	15	20
7	Construction and demolition waste (concrete- asphalt-Wood)	Waste treatment plants		2	



**Construction waste** (Construction and demolition waste)

The waste resulted from the construction and demolition activities, including the sand produced during digging, cement waste resulted from roads paving, It can be separated and sorted in it’s production sites to be a clean sand, concrete waste, and mixed waste.



**Construction waste**  
Construction and demolition waste



**Unwanted materials**

Any non-hazardous materials/goods declared by its owner to be unwanted and requires disposal, or at which a decision for its destruction/disposal is issued by the concerned authority, or that its proper disposal requires a special procedure.



**Healthy landfilling**

landfilling waste under or above the ground, in specific sites, under constant supervision and observation.



**Landfilling cell**

The selected area in the landfill for healthy landfilling processes. The large landfilling cell can be divided into smaller cells to organize it’s daily disposal processes.



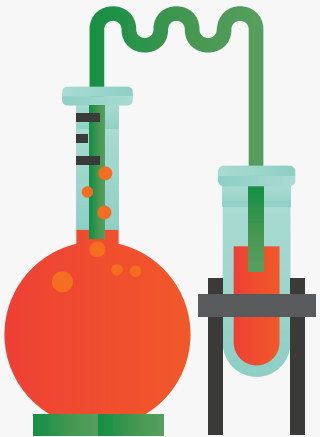
**Hazardous waste**

The waste that is not suitable for immediate disposal in the environment, or in the sewage system, or by traditional landfilling, and also any waste that is considered environmentally hazardous by the relevant authorities, or public health given the process in which they are produced through, or because of the existence of dangerous components in it, or because of their chemical and physical properties. It is classified to industrial waste and medical waste by Dubai Municipality.

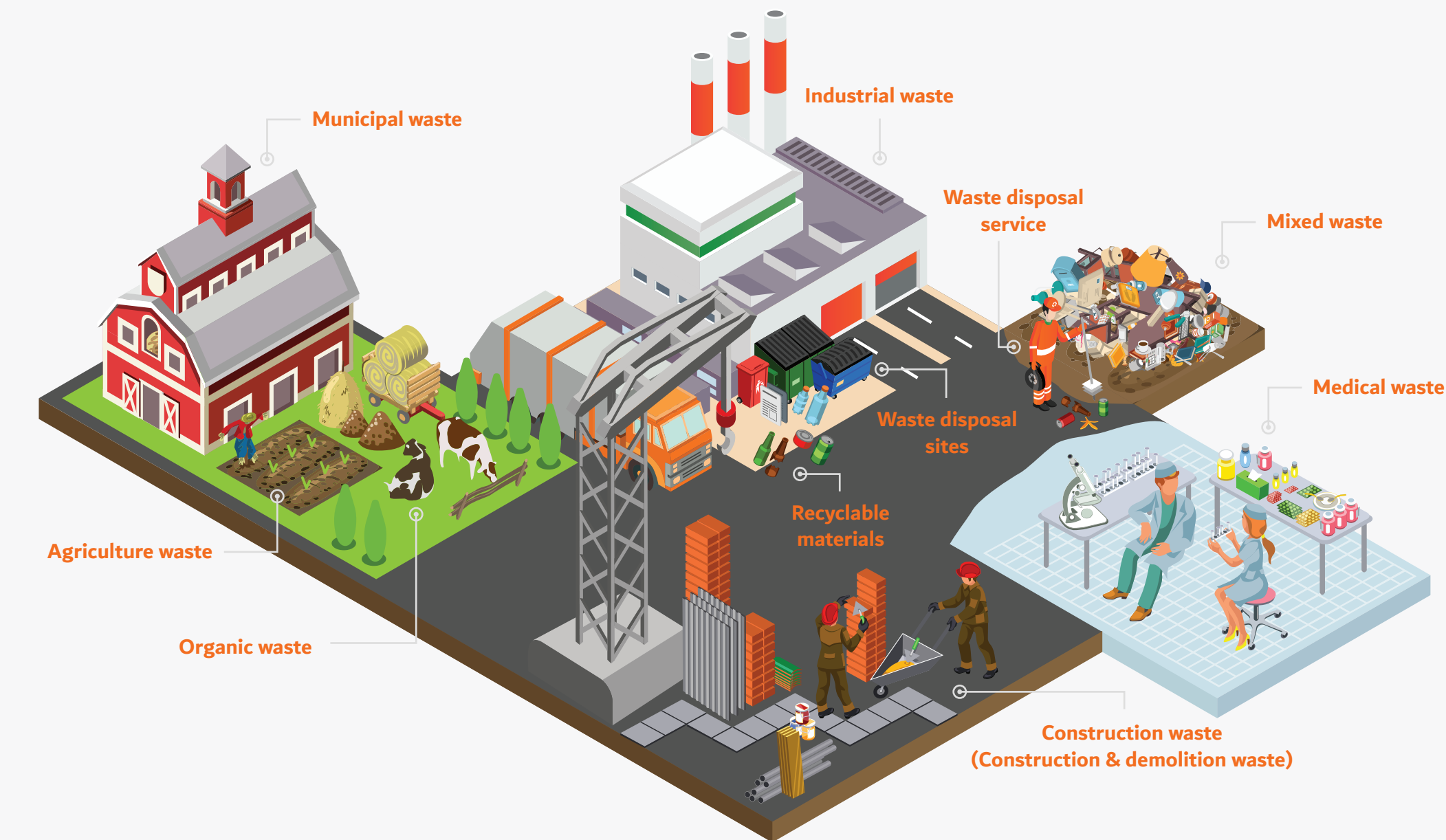


**Medical waste**

Any materials, or waste resulted from medical, therapeutic, nursing, diagnostic processes or laboratory tests, medical studies, or any similar processes including human and animal tissues, blood, physical secretions, rolls and bandages, injection needles and sharp instruments, mops and drugs, pharmaceutic products, laboratory transplantation dishes, or any other materials related or similar to it, that can be harmful or transmit an infection to a human.



**Hazardous and medical**  
Waste



## Terminologies



### Municipal waste

The waste that is usually collected by the Municipality or who represents it from the private sector. It includes waste generated from houses, shops, offices, buildings and institutions. It also includes volumetric waste and the waste resulting from certain services such as gardening, the cleaning of markets and roads if it was disposed as waste. Municipal waste is divided into agricultural and household waste, but does not include construction waste, sewage network waste or water treatment waste.



### Organic waste

Any waste resulted from animals or plants and can decompose biologically.



### Recyclable Material / Recyclates

The materials that is sent to material recovery facility to be sorted, or to the recycling stations to be treated and turned to new products, like paper, plastic, glass, and metals.



### Agriculture waste (green waste/ gardening waste)

The waste resulted from gardening activities in the gardens, roads, houses and entertainment farms, like trees and grass remains. but not including agriculture waste, or fertilizers and pesticides remains, animal sheds or salts and sludge produced from fields or otherwise.



**Organic waste**  
Animal and plant waste

## Waste Classification



The principle of (Waste Classification) guarantee the integrated waste management, and also dealing with all kinds of waste in an appropriate way according to the instructions issued to this subject.

## Encouraging the society



The principal of Encouraging the Society to decrease the waste production, and turning it to recycling and reuse, and avoid sending them to be buried in waste disposal site.

## Motivating the private sector who works in waste management



The principal of motivating the private sector who works in waste management, and provide the sustainability factors to it through providing them with a source of semi steady income, for picking the waste to sort and process it.

# Target group

## 01 Waste transporters category



Business sector / Environment



Hazardous and medical waste transporting organizations



Waste companies

## 02 Waste generators category



Business sector for Health and safety



Hotels and apartment hotels



Shopping malls

## 03 Food trading organizations category



Business sector for food safety

## 04 Building contractor category



Business sector planning and building

## The policy of issuing Waste disposal fees and fines

- The Municipality of Dubai issued the Executive Council Resolution No.58 of 2017 to approve the fees and fines of the waste disposal in the Emirate of Dubai, it aims to encourage all the organizations and trade establishments to transport all their produced waste to the waste treatment and sorting stations of the private sector instead of Dubai Municipality stations, as the articles of the resolution came to determine the amount of waste disposal fees based on the kind of waste and its treatment way.

The Waste Management Department of Dubai Municipality adopted many principles that help transferring the produced waste in the Emirate of Dubai away from the landfill path, which came to achieve the strategic goal of the integrated Waste Management Department to transfer all the produced waste away from the landfill path by the end of 2030.



### Source Segregation



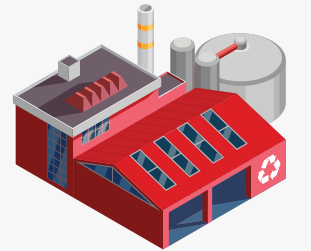
The (source Segregation) principle from all the household, commercial, and industrial resources.

### Duty of Care



The principle of (Duty of Care) means that any organization that produces waste is responsible of it in all the stage of its production, collection, transferring, and its final disposal.

### Polluter pays



The principle of making the waste producing entities pay all the expenses of the managing and treatment of waste in a sustainable way.

### Waste Tracking



The principle of (Waste Tracking) to guarantee that the waste producers will commit to obtaining the needed permits, which show who, when and where the waste was produced, before its transportation, where it was transported to, its amount, the sorted amount and to where it was transferred.



Introduction

# Why do you Generate large amounts of waste?

## If you can generate it in small amounts

- The Emirate of Dubai witnessed a large increase in the production of municipal solid waste, and the reason behind this is the high consumption rates as a result of urbanization and the development of civilization, improving the standard of living, and changing the consuming habits in the society, which lead to an obvious increase in the amount of waste, and the variety of it's source, and also lead to negative effects on health and environment. As the department of municipal solid waste suffers from the low investment rate in recycling, although there is a high percent of the recyclable waste specially the Plastics and paper, which forms 53% of the total waste, but the recycling rate is very low till now.



The plastic and paper waste forms around

53%

of the recyclable waste

Which made it one of the issues that has a big concern from His Excellency the Director General of Dubai Municipality and Waste Management Department, to develop the work system to be suitable for the strategic goals of the department. In this sense, Dubai Municipality started to create new policies and legislations that oblige source segregation, from household, trade and industrial resources. So we are going a head with steady steps towards establishing new principles to the dealing of the waste producing entities in the Emirate of Dubai through regulatory legislations for this section, as it is applied in most of the world countries. And this is considered to be one of the most best practices that helps in applying clear policies.



## Source Segregation

#### **Disclaimer**

The information provided on our website is for general information purposes only. While WKC endeavours to provide the most up to date and accurate information, documents and links on our website, we will not be held liable for any loss or damage including without limitation, indirect or consequential loss or damage, or any loss or damage whatsoever arising from the use any of the information provided on our website. For any queries regarding the information on our website, please contact us on [enquiries@wkcgroup.com](mailto:enquiries@wkcgroup.com).